



Busaif Enterprise

Shabbir: +91 9331921040

Busaif Enterprise

Stockists and Dealers of Stainless Steel Pipes & Fittings of
all types of grades SS 316, SS 304, SS 310 etc and of
Sch 5, 10, 40, 80, 160 and XXS.



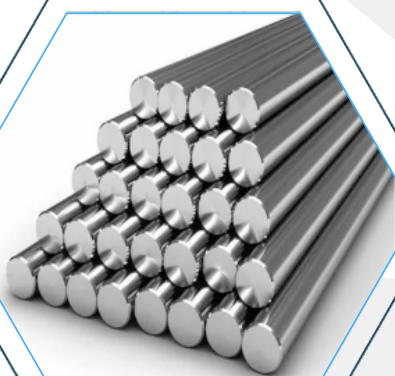
www.busaifenterprise.com



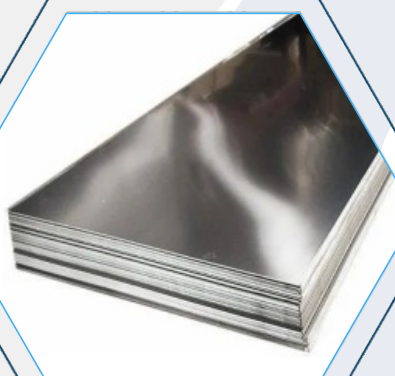
busaifenterprise52@gmail.com

S.S Pipes & Structures

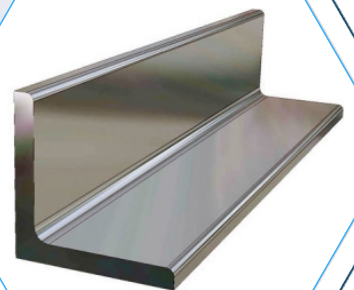
Stainless steel is a versatile material comprised of a steel alloy and a small percentage of chromium — the addition of chromium adds to the material's corrosion resistance, a trait that earned stainless steel its name. Because stainless steel is also low-maintenance, oxidation resistant, and doesn't affect other metals it comes in contact with, it is frequently used in a large array of applications, especially in piping, tubing, and fittings manufacturing. Based on the end use of the pipe, stainless steel piping is broken down into several categories.



Rod



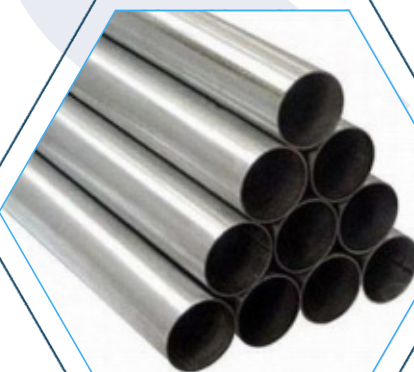
Sheet



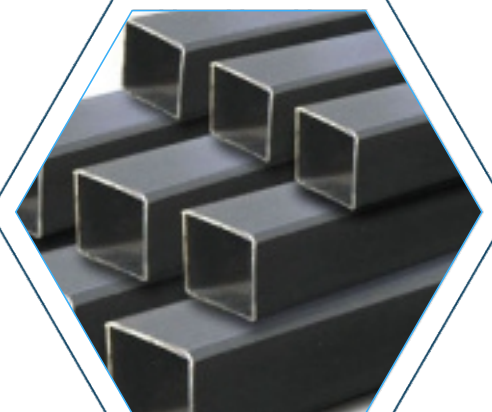
Angle



Rectangle Pipe



Round Pipe



Square Pipe

To see more products, visit our website: www.busaifenterprise.com

S.S Investment Casting Fittings

Supplier of Stainless Steel Investment Casting Pipe Fittings. The offered range of 1/8" to 4" with standard pressure class of 150lbs. we can offer ex-stock delivery of standard size of stainless steel IC Pipe Fittings in SS - 304 & SS - 316 grade. Investment casting (IC) threaded Pipe fittings can be produced and supplied in various shapes such as Tee, Elbow, Coupling, Hex Nipple, Hose Nipple, Barrel Nipple, Union, SMS Union.



Reducing TEE



Bushing Acero



Coupling



Reducer Socket



Elbow

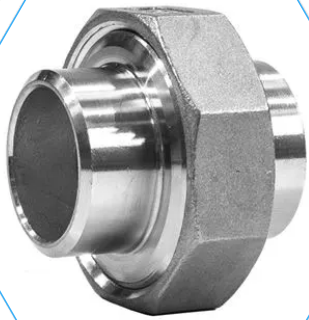


Pipe Nipple

To see more products, visit our website: www.busaifenterprise.com

S.S Butt weld Fittings

We have an extensive inventory of stainless steel elbows, caps, tees, reducers, crosses, stub ends and many other stainless steel butt welding fittings to meet your specifications and standards. We carry various stainless, carbon, aluminum and nickel alloy butt weld fittings to meet your project needs. Butt weld pipe fittings are engineered to be welded at the job site to connect piping that allows a change in direction or other specifications such as reducing or increasing the diameter of pipe being used or branching or ending the pipe. This creates an efficient system of pipe that is used to safely transport fluids such as oil or chemicals.



Cone Seat Union



TEE



Long Radius Elbow



Cross



Elbow



Nipple

To see more products, visit our website: www.busaienterprise.com

S.S Socketweld Fittings

Socket Weld fittings are used in systems requiring exceptional strength of welded joints and are mainly used for small pipe diameters. These fittings have the advantage of providing strength similar to a welded joint while offering speed and efficiency when joining pipe, tube, fittings and valves together. Socket weld fittings can also be used in place of threaded fittings, causing the risk of leaks to be much smaller.



Socket Reducer



Socketweld Elbow



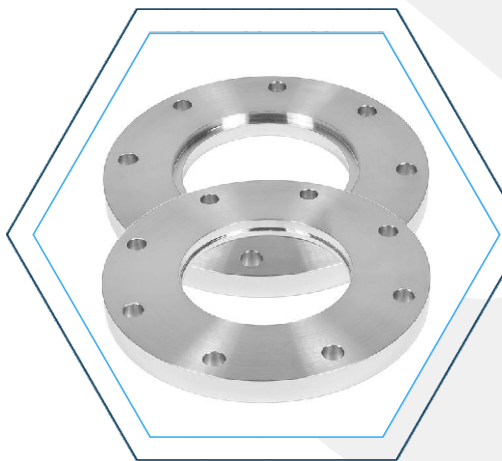
Socketweld TEE



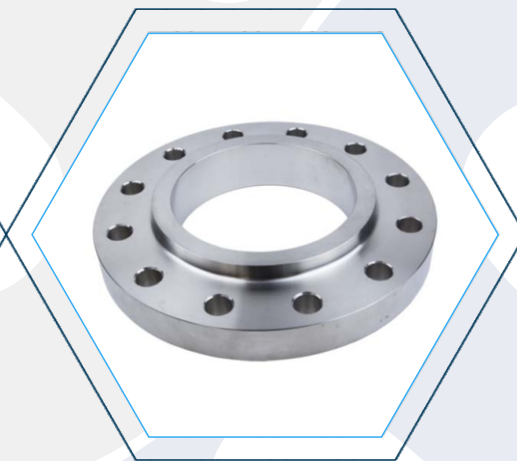
Socketweld Boss

S.S Flanges

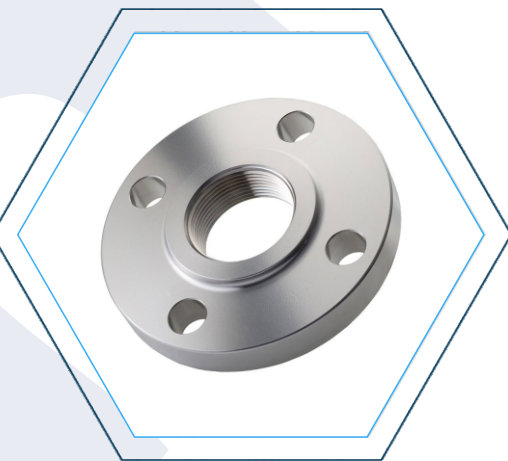
The SS Flanges are welded neck raised face flanges. The welded neck supports these flanges to hold the pipes in place while welding. The raised face allows for maximum attachment for either welding or space for bolts and nuts. There are different brandings and standards of flanges such as the Stainless Steel Threaded Pipe Flange which are known for their strength, corrosion resistance and quality. We supply all kinds of stainless steel flanges in different standards, specifications and dimensions.



Socket Reducer



Socketweld Elbow



Socketweld TEE



Socketweld Boss

Pipes & Fittings

Pipe fittings, also known as pipe connectors, attach one pipe to another in order to lengthen the run or change the flow direction in a plumbing system. These are used to combine, divert or reduce the flow of the water supply, and they come in a variety of sizes to fit the pipe they will connect. Pipe fittings dimensions are important and there are sizing standards to follow. While most have openings of the same size on each end, some fittings are designed with different-sized openings and serve as the transition from one size pipe to another.



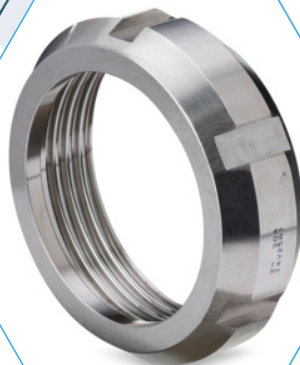
Dairy Bend



Dairy Clamp



Cross TEE



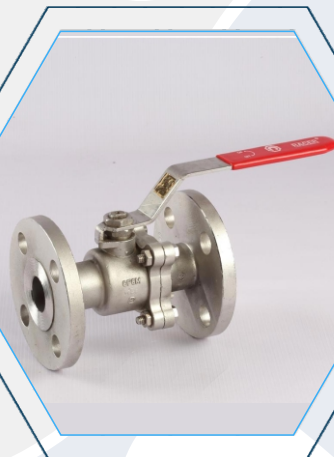
Dairy Bend with SMS Union

Ball Valves - Flanged / Screwed

Ball valves provides bubble tight services, Quick to open and close, Smaller in size than a gate valve, Lighter in weight for easy handling, Reliable in high pressure and high temperature applications. We have perfect types such as screwed and flanged ends valves in various material of constructions as stainless steel, Cast Iron, Brass, Etc. Industries where Air, Gaseous and liquid applications requires for bubble tight services, Instrument Root Valves, cooling water and feed water systems, steam services, low point drains and high point vents in liquid gaseous and other fluid service uses ball valves in wide quantity.



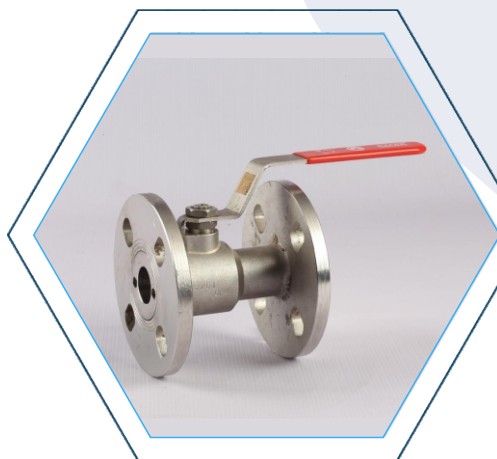
**1 PC Ball
Flanged Valve**



**2 PC Ball Flanged
Valve**



Racer Ball Valve



Ball Valve



**3 PC Ball Screwed
Valve**

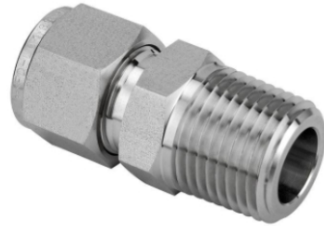
To see more products, visit our website: www.busaifenterprise.com

Instrument Fittings

Stainless Steel Instrumentation Fitting is used for specialized applications in oil and gas installations, steam and gas turbines, aerospace, defense, power generation, chemical processing, petrochemical, alternative fuels, shipbuilding, and medical equipment. These Stainless Steel Instrumentation Fittings are available in various types and grades out of which SS 304 Instrumentation Tube Fittings and SS 316 Instrumentation Tube Fittings are the two most commonly used grades.



Elbow



Male Connector



Crosses



Ferrule



**Compression Union
Cross Tube Fitting**



Male Connector

To see more products, visit our website: www.busaifenterprise.com

S.S 304 Pressure Gauges & Instrumentation

SS Pressure Gauges are based on the proven Bourdon tube measuring system. On pressurization, the deflection of the Bourdon tube, proportional to the incident pressure, is transmitted to the movement via a link and indicated. The modular design enables a multitude of combinations of case materials, process connections, nominal sizes and scale ranges.



Homogenizer Type Pressure Gauge



Seal Direct Flanged Flushed Type



Seal Direct Couple Type



Liquid Filled Pressure Gauge



Inert Gas Expansion Type Thermometer

To see more products, visit our website: www.busaifenterprise.com

S.S 304 Instrumentation & Accessories

Stainless steel 304 has excellent corrosion resistance in a wide variety of environments and when in contact with different corrosive media. Pitting and crevice corrosion can occur in environments containing chlorides. Stress corrosion cracking can occur at temperatures over 60°C.



**Screwed Thermowell
Straight Screwed Type**

**Three Valve
Manifold**

Cock Gauge



**Thermowell Vanstone
Type**

**Flanged Tapered
Type**

**Needle Valve
Type**

To see more products, visit our website: www.busaifenterprise.com

Camlock Fittings

Camlock fittings—also called cam and groove couplings—are sturdy connectors used to join hoses or pipes. These couplings are distinguished by their ease of use. Unlike many high-performance couplings, camlock fittings install rapidly with no tools required. This advantage arises from their unique design, which aligns external locking arms with an internal gasket for quick and intuitive sealing.



Coupler Type D



Coupler Type C



Coupler Type B



Adapter Type ED



Adapter Type A



Adapter Type AB

Grooved Camlock Fittings

Camlock fittings—also called cam and groove couplings—are sturdy connectors used to join hoses or pipes. These couplings are distinguished by their ease of use. Unlike many high-performance couplings, camlock fittings install rapidly with no tools required. This advantage arises from their unique design, which aligns external locking arms with an internal gasket for quick and intuitive sealing.



Eccentric Reducer



Adaptor



Cross Outlet Threaded



Concentric Reducer



Outlet Threaded



Reducing Elbow

To see more products, visit our website: www.busaifenterprise.com

PP Industrial Valves & Fittings

We provide PP Ball Valves, HDPE Ball Valves, Polypropylene Ball Valve, PP NRV Valve, PP & HDPE Pipe Fitting, Engineering Products, Diaphragm valves, Non Return Valves, Foot Valves, PP Butterfly Valves, Flow Indicator Valves, 'Y' Type Strainers, Pipe Fittings, Agriculture Valve & fittings & drip irrigation item.



PP Foot Valve



PP Diaphragm Screwed End Valve



PP Diaphragm Flanged End Valve



PP Butterfly Valve



PP Y-Type Strainer Flanged



PP Foot Valve Flange End

To see more products, visit our website: www.busaifenterprise.com

Dasmesh Water Flow Meter

A water meter measures the quantity (volume) of water that passes through a pipe or other outlet. Typically, meters use a standard unit of measure for volume, such as cubic feet or gallons. Your meter works like a car odometer, recording the cumulative amount of water that has passed through the meter. By understanding how to read your meter and calculate your usage, you will be able to verify that we are reading your meter fairly and accurately, and to spot problems, such as leaks.



**Class B Water
Meter**



**Flanged Water
Meter**



**BD Class Water
Meter**



**Woltman Type
Water Meter**



**Multi-jet Class A
Water Meter**



**A.M.R. Type
Water Meters**

To see more products, visit our website: www.busaifenterprise.com



Busaif Enterprise

33/1, N.S Road Marshall House, Room No 63 & 9, West Bengal – 700001

Mobile: +91 9331921040 | busaifenterprise52@gmail.com

www.busaifenterprise.com